

# BRIDGEND COUNTY BOROUGH COUNCIL

## REPORT TO THE OVERVIEW AND SCRUTINY COMMITTEE 2

17 APRIL 2018

### REPORT OF THE CORPORATE DIRECTOR, SOCIAL SERVICES AND WELLBEING

#### DEMENTIA SUPPORT AND CARE IN BRIDGEND COUNTY BOROUGH

##### 1. Purpose of Report

- 1.1 The purpose of this report is to provide an update to the Overview and Scrutiny Committee on the support and care for people with dementia living in Bridgend County Borough; and address specifically the questions raised by the Committee in respect of dementia in Bridgend County Borough and regionally.

##### 2. Connection to Corporate Plan

- 2.1 This report links to the below improvement priorities in the Corporate Plan 2016-20:
- Helping people to be more self-reliant;
  - Smarter use of resources;
  - Supporting a successful economy.

##### 3. Background

- 3.1 As previously reported to Committee, in 2015 Bridgend County Borough Council, in partnership with Abertawe Bro Morgannwg University Health Board (ABM UHB) and third sector, developed a Dementia Strategy and Delivery Plan. During the implementation of the plan there were a number of national changes and initiatives that impacted on how the plan should be delivered, the most of significance of which were the Social Services and Wellbeing (Wales) Act in April 2014, and the Well-Being of Future Generations (Wales) Act 2015, the development of the *National Dementia Vision for Wales 2016* and the development of the *Together For Mental Health Delivery Plan 2016 – 2019*. It was the intention of partners locally to revise the plan in the context of these changes, however further work on the Dementia Strategy was delayed by the decision to await the publication of Welsh Government's Dementia Action Plan for Wales 2018 – 2022; this plan was finally published in February 2018 with the intention of delivering on Wales as a *Dementia Friendly Nation*. The ambition of the plan was summed up by the Cabinet Secretary as follows:

*“We have a clear vision for Wales to be a dementia friendly nation that recognises the rights of people with dementia to feel valued and to live as independently as possible in their communities.”*

*Vaughan Gething, Cabinet Secretary for Health and Social Services*

- 3.2 The following statements from stakeholders and people with dementia have been adopted by Welsh Government as principles to underpin the plan:
- *We have the right to be recognised as who we are, to make choices about our lives including taking risks, and to contribute to society. Our diagnosis should not define us, nor should we be ashamed of it.*

- *We have the right to continue with day-to-day and family life, without discrimination or unfair cost, to be accepted and included in our communities and not live in isolation or loneliness.*
- *We have the right to an early and accurate diagnosis, and to receive evidence based, appropriate, compassionate and properly funded care and treatment, from trained people who understand us and how dementia affects us. This must meet our needs, wherever we live.*
- *We have the right to be respected, and recognised as partners in care, provided with education, support, services, and training which enables us to plan and make decisions about the future.*
- *We have the right to know about and decide if we want to be involved in research that looks at cause cure and care for dementia and be supported to take part.*

3.3 It is now the intention of the Directorate to review joint intentions with partners in the light of the national Dementia Action Plan. Regionally the ABM UHB is bringing together Local Authority and other stakeholder partners, to deliver a regional approach to older people's mental health services; as well as supporting the development of local delivery boards in each local authority area.

3.4 Given that the plan was only published in February, work is still ongoing to finalise the terms of reference, and membership for these various groups: the groups are likely to comprise health and social care professionals as well as third sector organisations with an interest in working with people and their families with dementia. However, it will be the intention of the Council to ensure that Bridgend's local dementia strategy is refreshed and revised to reflect both the national and regional, as well as local ambitions for people living with dementia.

3.5 Following consultation Welsh Government has structured the National Action Plan around outcomes which follow a pathway approach to dementia care. The planned outcomes are:

- *Individuals will understand the steps they can take to reduce their risk, or delay the onset, of dementia.*
- *The wider population understands the challenges faced by people living with dementia and are aware of the actions they can take to support them.*
- *People are aware of the early signs of dementia; the importance of a timely diagnosis; and know where to go to get help.*
- *More people are diagnosed earlier, enabling them to plan for the future and access early support and care if needed.*
- *Those diagnosed with dementia and their carers and families are able to receive person-centred care and support which is flexible.*
- *Research is supported to help us better understand the causes and management of dementia and enables people living with dementia, including families and carers, to be co-researchers.*
- *Staff have the skills to help them identify people with dementia and to feel confident and competent in supporting individual's needs post-diagnosis.*

3.6 To support the delivery of the National Vision Welsh Government is investing an additional £10 million a year from 2018/19 over three years, to support the delivery of the following key actions in this document, which include:

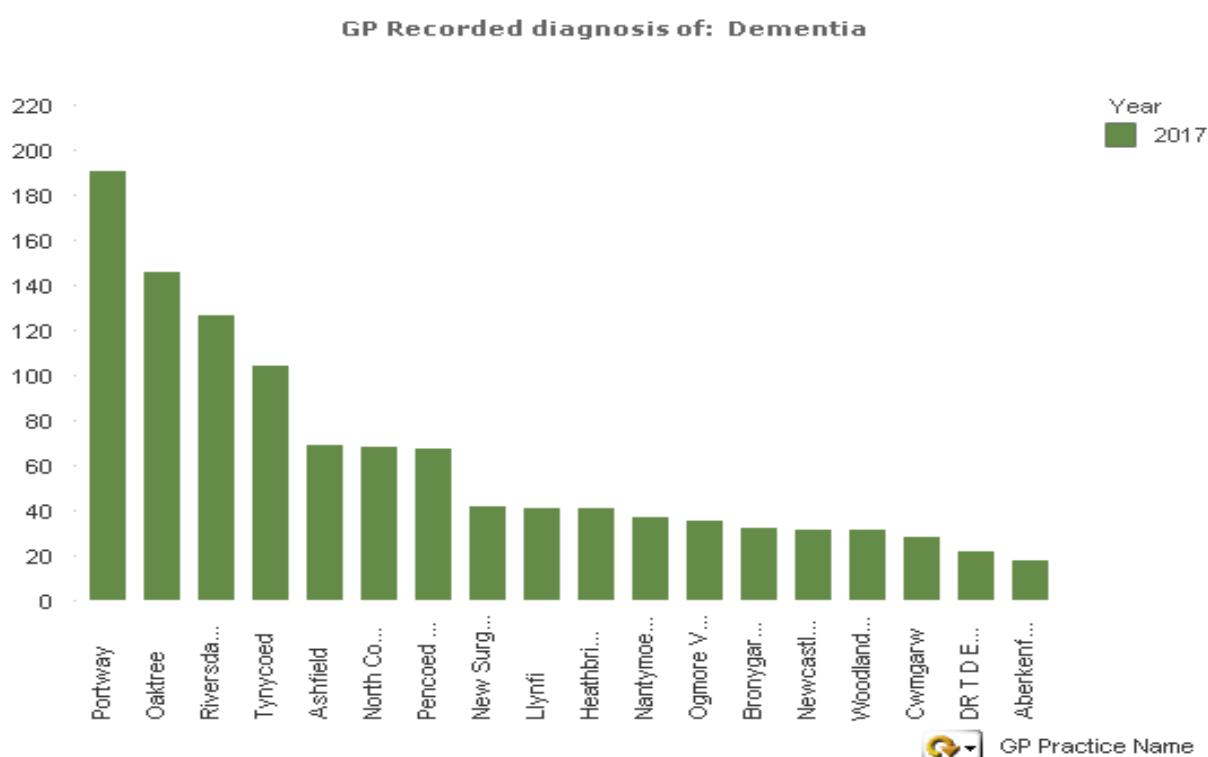
- Developing 'teams around the individual' to provide additional support for people with dementia and their families and / or carers;
- Reviewing and standardising the role of dementia support workers;

- Development of an All Wales Dementia Allied Health Practitioner Consultant post which will give advice and support to health boards and local authorities to drive forward service improvements;
- Increasing the rate and timeliness of dementia diagnosis;
- Strengthening collaborative working between social care and housing to enable people to stay in their homes longer;
- To roll out the 'Good work – Dementia Learning and Development Framework' to enable people who work with those living with dementia to have the skills to recognise symptoms earlier and help them feel confident and competent in caring for and supporting those living with dementia;
- Introducing the principles of 'John's Campaign' across all health boards and trusts.

3.7 The Council and Health Board are yet to have information on how the £10 million is to be distributed through Wales, but understand it will be distributed through the regional partnerships.

### Prevalence of dementia in Bridgend

3.8 ABM UHB has provided the following up-to-date information on people with a recorded diagnosis of dementia in 2017 in Bridgend County Borough. The following table breaks down the diagnosis by GP practice in Bridgend County Borough.

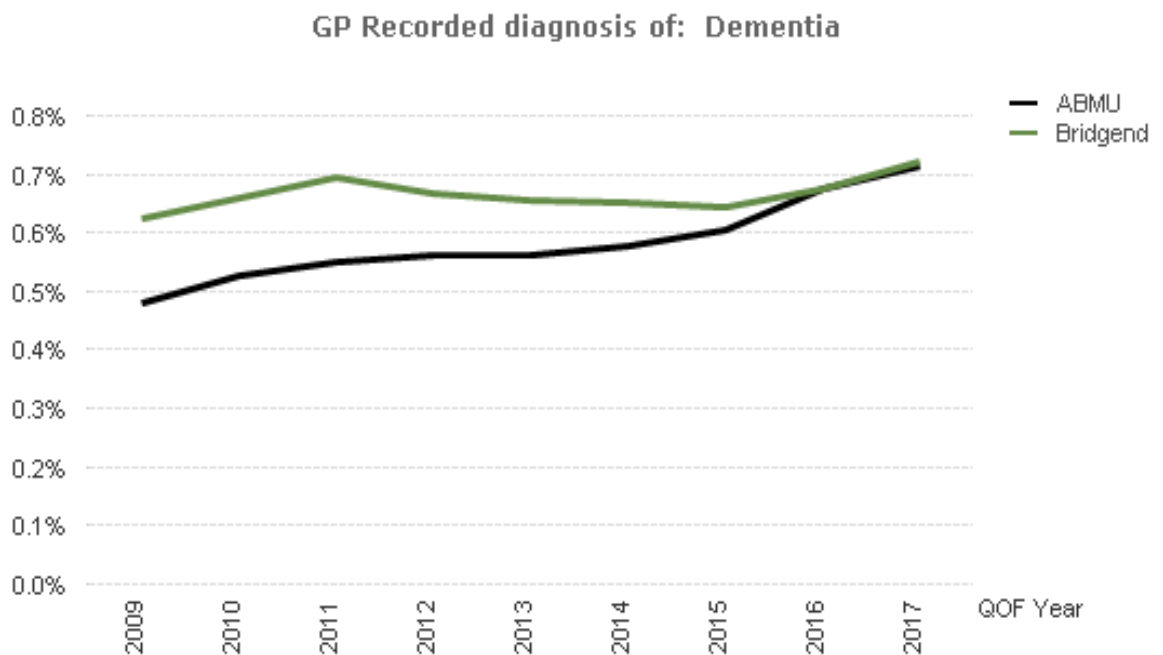


3.9 In terms of numbers of people in 2017, this is broken down in the following way:

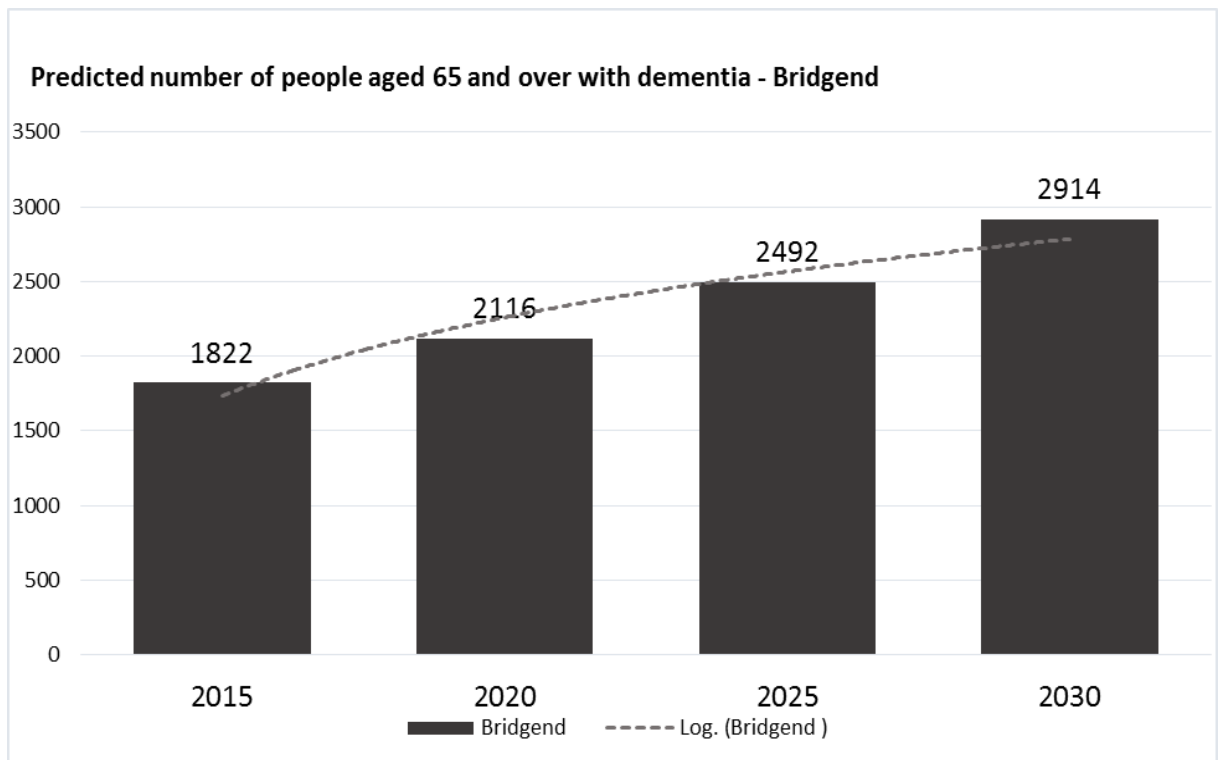
GP Practice Name	Year	Bridgend	Community Network cluster
Portway	2017	191	West
Oaktree	2017	146	East
Riversdale	2017	127	East

Tynnycoed	2017	104	North
Ashfield	2017	69	East
North Cornelly	2017	68	West
Pencoed Medical Centre	2017	67	East
New Surgery Pencoed	2017	42	East
Llynfi	2017	41	North
Heathbridge	2017	41	West
Nantymoel	2017	37	North
Ogmore Vale	2017	35	North
Bronygarn	2017	32	North
Newcastle	2017	31	East
Woodlands	2017	31	North
Cwmgarw	2017	28	North
Dr T D Eales Surgery	2017	22	West
Aberkenfig	2017	18	North
<b>Total:</b>		<b>1130</b>	

3.10 The following table illustrates the increase in recorded dementia in Bridgend County Borough:



3.11 The predicted number of people over 65 in Bridgend living with dementia from the population assessment is as follows, members will note that unsurprisingly there is a difference in the figures for people with a recorded diagnosis of dementia and those predicted to be living with dementia, within the County Borough as people do live with dementia and not go through a formal diagnosis process through a consultant.



- 3.12 It is not possible to provide Members with the information about the type of dementia, the age of people and whether people were diagnosed with dementia prior to moving into the County Borough, because no data is available to provide that information.

***Review of joint intentions with health and the third sector***

- 3.13 As indicated earlier it is the intention of the Council to work collaboratively with the NHS and third sector partners to reinvigorate the local dementia strategy and delivery plan in the light of the requirements of the national Dementia Action Plan for Wales 2018 – 2022. The work to establish the regional strategic and local delivery groups is currently being progressed, and will be completed in the first quarter of 2018.

- 3.14 The Directorate in conjunction with the regional Western Bay partnership carried out a population assessment throughout 2017/2018, the key priorities highlighted in the assessment for Bridgend relating to Dementia services include:

- Improved service provision: effective joint working, provision for younger adults, more support for carers and provision for those with sensory impairment
- Improved diagnosis and timely interventions: early diagnosis, appropriate medication, and accessible assistive technology
- Improved access to better information: raised awareness, timely communication, accurate information, and effective prevention of escalation
- Improved training: staff and carers who are trained and competent dignified end-of-life care
- Improved environment: suitable care homes & accommodation, supporting independence within communities, accessible transport, and dementia-friendly communities

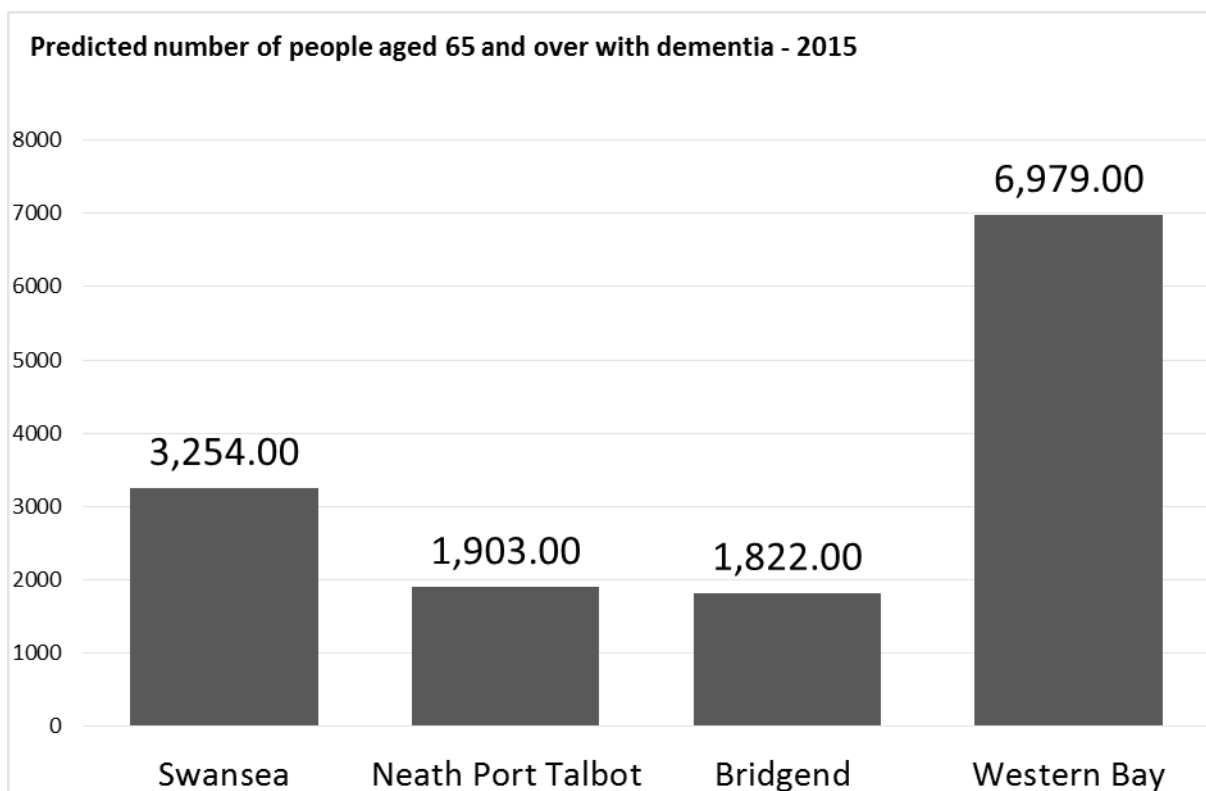
These priorities will inform both the regional and local delivery plans going forward.

### The development of nursing residential care places for people with dementia

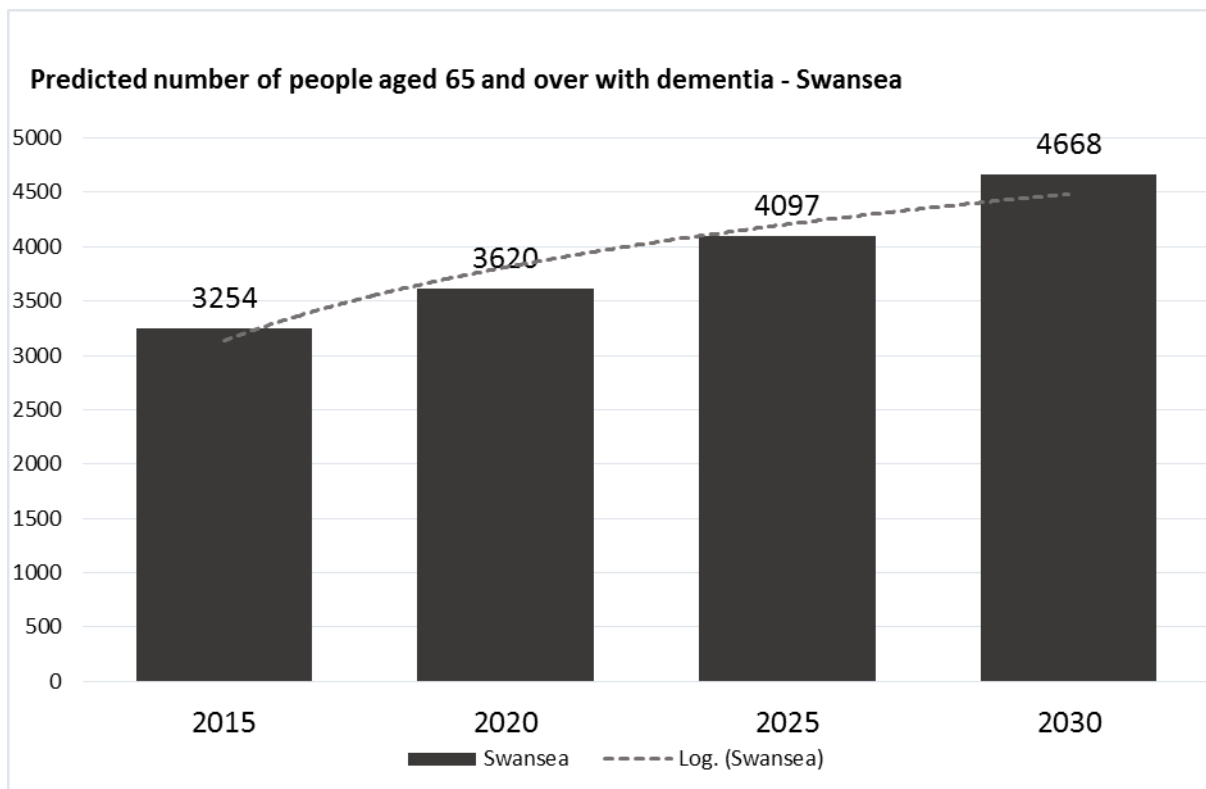
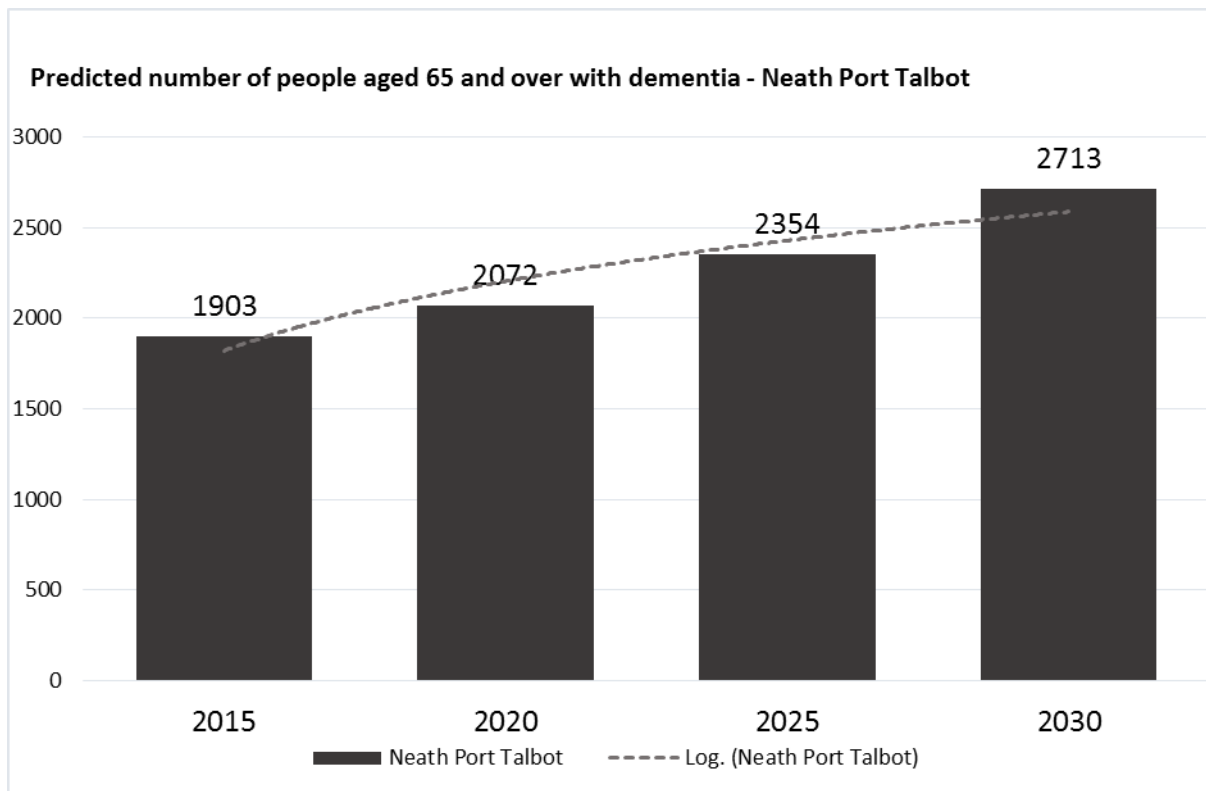
- 3.15 The Council has developed, in collaboration with the Western Bay Partnership, a regional Care Home Strategy and local Market Position Statement; the pressures and demands highlighted in both documents have been shared with the local care home provider forum, particularly in relation to the anticipated growth in people living with dementia and the anticipated need for more dementia nursing care beds.
- 3.16 In addition the Council is working in partnership on ABM University Health Board's 'Models of Care Project'. The Directorate is working on this strategic project in partnership with ABM UHB in the Bridgend area; the project is organized by the health board which is seeking to extend the number of dementia care beds within the County Borough. Members will also be aware that an existing Council home within the County Borough is to be remodelled, again with a focus on extending the provision of dementia nursing beds; the detail of this initiative is contained the report to Cabinet on Tuesday 27<sup>th</sup> February 2018.

### Comparison with Cardiff, Neath Port Talbot and Swansea

- 3.17 The following table from the Western Bay population assessment indicates the number of people predicted to be living with dementia in the counties of Bridgend, Neath Port Talbot, and Swansea in 2015.

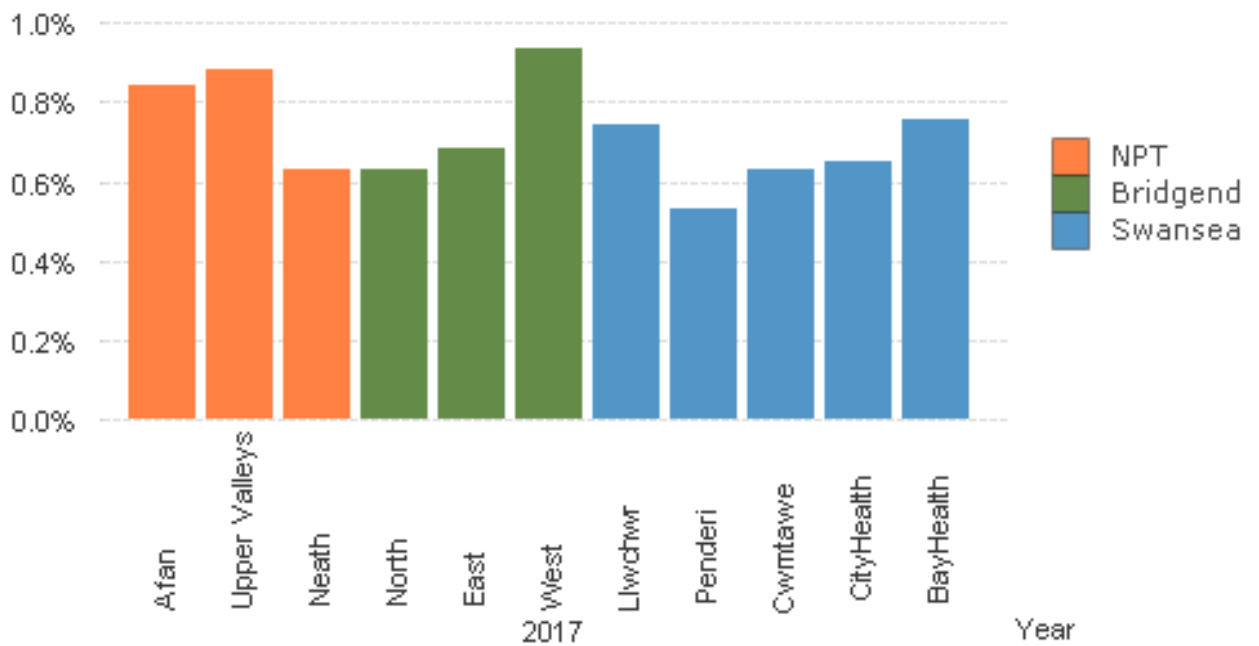


- 3.18 The following two charts predict the number of people living with dementia in Neath Port Talbot and Swansea, and can be compared to the chart above Bridgend in paragraph 3.11.



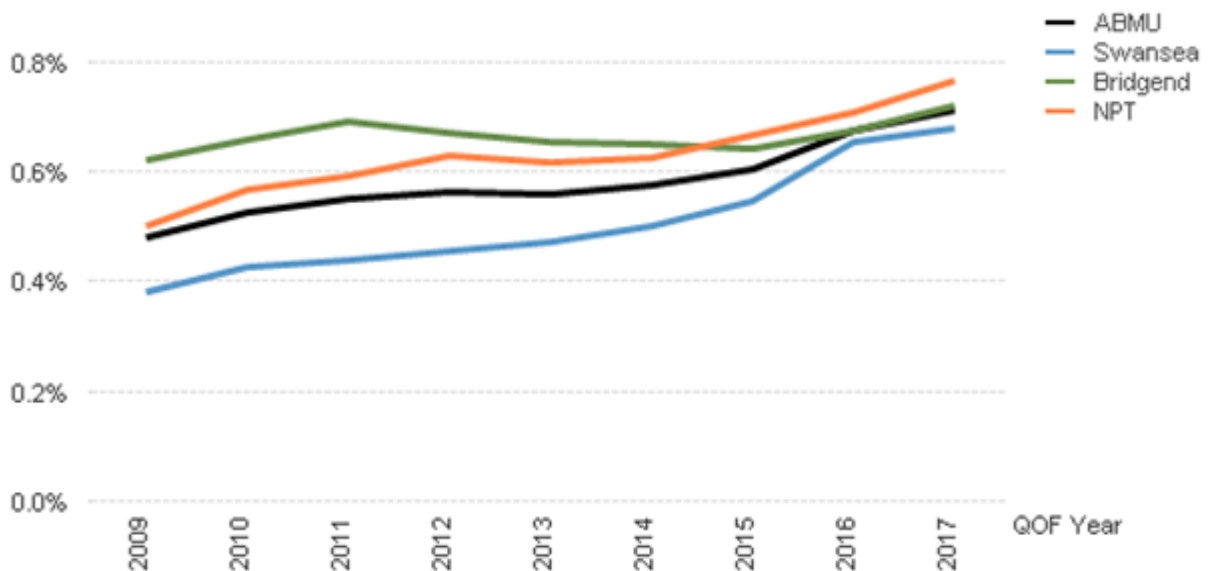
3.19 The recorded diagnosis by GPs of dementia across the region is illustrated in the following chart:

### GP Recorded diagnosis of: Dementia



3.20 The following table indicates the recorded diagnosis of dementia across the ABM University Health Board region:

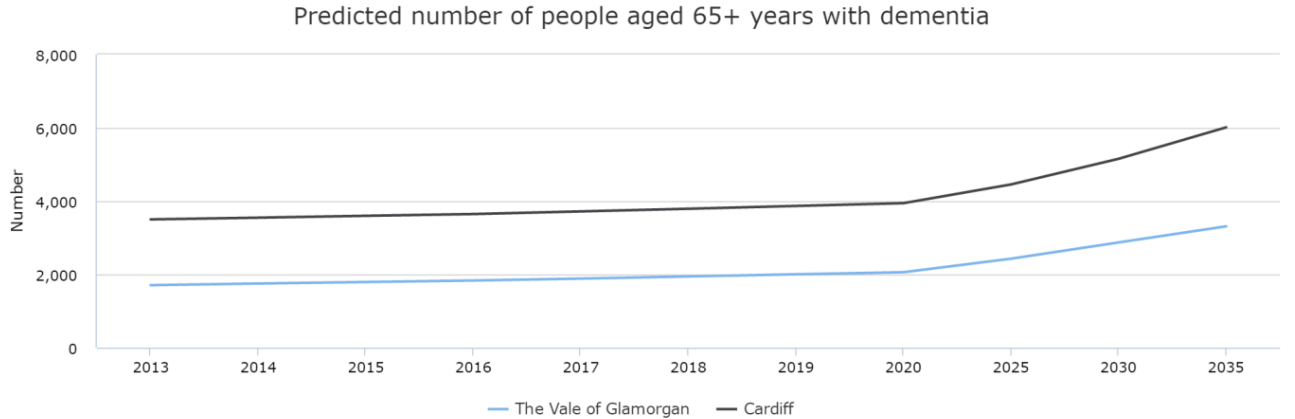
### GP Recorded diagnosis of: Dementia





3.21 The following information is taken from Cardiff and the Vale of Glamorgan's Population Needs Assessment for the Social Services and Well-Being (Wales) Act 2014.

3.21.1 The prevalence and predicted number of older people aged 65 and over with dementia in Cardiff and the Vale of Glamorgan is illustrated in the following Chart:



3.21.2 There are estimated to be 5,000 people with dementia in Cardiff and the Vale of Glamorgan, nearly 6 in 10 (58%) of whom have a diagnosis.

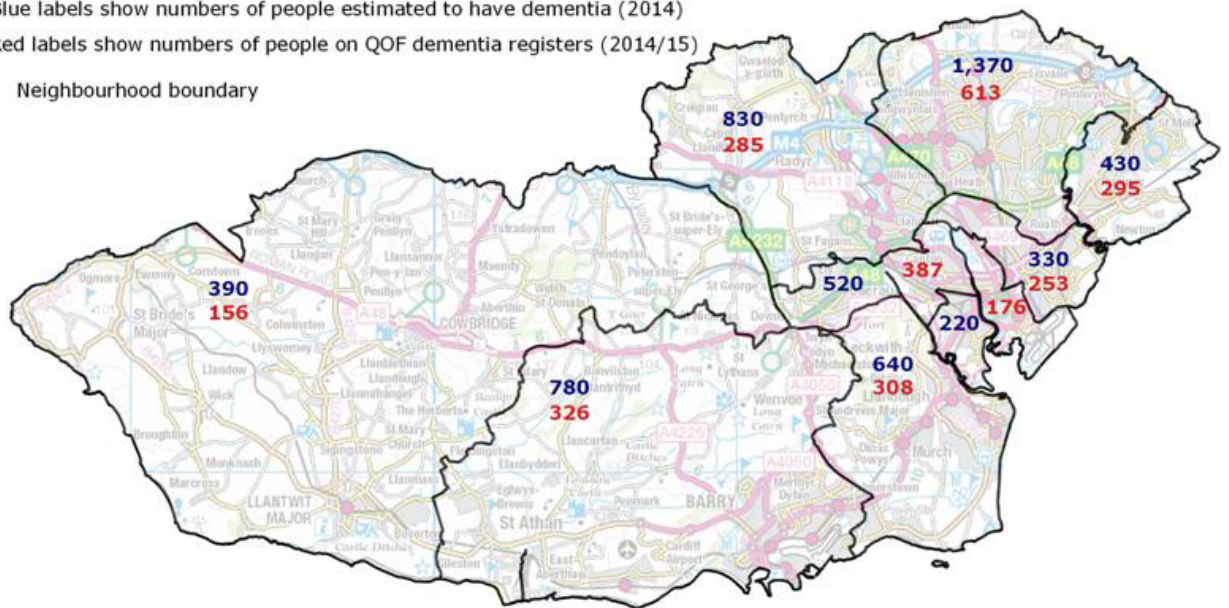
**People with dementia, 2014 / 2014/15**

Neighbourhood management areas in Cardiff & Vale UHB

**390** Blue labels show numbers of people estimated to have dementia (2014)

**156** Red labels show numbers of people on QOF dementia registers (2014/15)

Neighbourhood boundary



Produced by Public Health Wales Observatory, using MYE (ONS), Daffodil & QOF (WG)  
 © Crown Copyright and database right 2016, Ordnance Survey 100044810

3.23 The population assessment has indicated that there will be an increase in the prevalence of dementia in Bridgend County Borough. The Population of older adults 65+ is predicted to increase by 48% by 2030, and it is well known that dementia is more common as people age; for example one in 14 people over 65 and one in 6 people over 80 will have a form of dementia. This is likely to mean, that somewhere in the region of 3000 people aged over 65, will be living with dementia in Bridgend by

2030. The increase in the population of people living to be aged 85+ is the main factor in the increase of the prevalence of dementia within the County Borough; similar increases in prevalence of dementia can be seen, probably for the same reasons, in Neath Port Talbot, Swansea and Cardiff and the Vale of Glamorgan.

### **Dementia Awareness and Dementia Friendly**

- 3.24 Bridgend Association of Voluntary Organisations (BAVO), the council's partners in delivering dementia friendly Bridgend have advised that, in the Vale of Glamorgan, Barry, and Dinas Powys are recognised by Alzheimer's Society as working towards becoming dementia friendly communities. In Barry a number of organisations are in the initial stages of receiving recognition of the Kite Mark scheme: a process that recognises an organisation as meeting established criteria to be dementia friendly. Throughout the Vale of Glamorgan a number of additional areas are in the process of establishing steering groups, and/or submitting action plans to the Alzheimer's Society to receive recognition of working towards becoming 'dementia friendly'. Two further areas in the Vale of Glamorgan, Cowbridge and Penarth, have established steering groups and have begun working towards achieving dementia friendly community status.
- 3.25 The Committee will be aware that in 2016 initial work took place within Maesteg to make it the first town within Bridgend County Borough to gain the status of 'working towards a Dementia Friendly Community'. Through partnership working BAVO, the Council and the Health Board, linked with the staff of local businesses, organisations and the Town Council, to encourage them to participate in the Dementia Friends sessions.
- 3.26 This collaboration across organisations involved working with the community to highlight the benefits that being a dementia friendly community would bring to the residents of Maesteg. This work supported the people of Maesteg to have an understanding of dementia and how it affects individuals; in turn it enabled people and their families to feel more confident about living with their dementia, knowing that within their community people had an awareness of dementia, and the community that was supportive of people to remain independent and live well with dementia.

## **4 Current Situation/Proposal**

- 4.1 Since the Maesteg launch more than 1,500 people from businesses, the emergency services, shops, churches, schools and voluntary organisations within Bridgend County Borough have become Dementia Friends. Many organisations have nominated individuals to become Dementia Champions, enabling them to deliver 'dementia friends' sessions in their organisations; and this approach has supported a sustainable way to ensure that Dementia Friends training continues to be rolled out across the County. In 2018 the areas that have obtained the status of *Working Towards a Dementia Friendly Communities* are Porthcawl, Cefn Cribwr, Cornelly, Kenfig Hill and Pyle. There are plans in place to ensure that by 2019 the areas of Pencoed and Bridgend Town will gain the same status.
- 4.2 In addition, in 2017 a partnership of Halo, BAVO and the Alzheimer's Society saw the launch of a pilot to deliver dementia friendly swimming sessions, where people living with dementia and their carers can attend the swimming pool, with assistance from trained dementia friendly staff in the pool, along with the opportunity for a meeting in

the café afterwards. There have been other initiatives such as for example, developing Memory Lane Cafe at Pyle, which was developed in partnership with the community, the Library service (AWEN) and the Community Network Team based at Pyle Resource Centre.

4.3 The rollout of dementia friendly communities is being coordinated on behalf of the local authority and health board by Bridgend Association of Voluntary Organisations (BAVO). The Council and University Health Board are continuing to support BAVO in delivering a dementia friendly Bridgend County Borough. In 2017 there was an opportunity for all Council Members to learn about the work being undertaken by BAVO in partnership with the Alzheimer's Society to support Bridgend County Borough to become a dementia friendly community, and to train as dementia friends. There are plans to offer further sessions to Members and consideration is being given to extend the training to wider staff groups.

4.4 Specialist services already in place within Bridgend include:-

- A therapy led short term specialist reablement service known as Bridgeway. Individuals are able to access the service following a social work assessment of needs.
- There are two Dementia Support workers which are funded from the Welsh Government grant known as the Integrated Change fund and are based in the Community Resource team. This service provides support to those individuals that are either pre or early diagnosed with Dementia.
- In addition, there is a well-established dementia coordinator service funded via ABM UHB and individuals access this service via a referral from a Consultant; people are followed up individually from clinic after their appointment. It provides support service and includes a home visit element and an Information, Advice and Assistance service.
- A specific social work team collocated with ABMU which is available for those individuals that are in the secondary mental health services with ABMU. There are currently 145 individuals on this team's case load and is those individuals that present with complex needs which are overseen by a clinical professional.
- In older people integrated services, there are currently in the region of 60% of the overall services where individuals are being supported whose presenting need include early stages of dementia and/or those that have been diagnosed with dementia but are able to live and manage in the community by receiving services from primary care and community based clinical support such as from a community psychiatric nurse (CPN) and services commissioned via a social worker.
- In terms of day services, there is a specialist dementia unit located within the Bridgend Resource Centre based at Waterton in Bridgend. This specialist dementia service is for people who have moderate or advancing dementia; these are people who need higher levels of staffing support to meet their needs. They are usually people whose needs could not be met fully within a community based resource or in a generic day service
- In terms of younger people with dementia, the council commissions specialist services to enable individuals to live and access community services; this would include flexible short break services to support people and their carers.
- Dementia care training is provided in collaboration with the ABMU Dementia Care Training Team. Planned training for 18/19 includes:
  - Five x 5 day series courses – 2 for domiciliary care providers, and 3 for residential care home providers

- Dementia Care for Managers – 2 day course
- Dementia Care for Social Workers – 2 day course
- Dementia Care and Learning Disability

4.5 Throughout 2018/2019, as described the Directorate will work with partners to meet the priorities identified and will include the plans detailed below:-

- Working with ABMU to increase the level of nursing beds registered for people with dementia in Bridgend;
- Longer term proposal for one of the current residential homes in BCBC to be tendered as a going concern where the longer term requirements would be to increase the number of Nursing Elderly Mentally Infirm (EMI) beds;
- The opening of two Extra care schemes in Bridgend which will open in September 2018 will have dementia friendly facilities with the environment designed to support individuals with dementia. These schemes will include the creation of 25 residential EMI beds;
- The Directorate is currently undertaking a needs led recommissioning of carers' services within the County Borough which includes an element linked to short breaks which will have a strong focus towards dementia support;
- New day opportunities are being explored;
- Work will continue in partnership with the third sector to support people with Dementia, for example, dementia café based in Pyle Life centre.

## **5. Effect upon Policy Framework and Procedure Rules**

5.1 There is no impact on the policy framework and procedure rules.

## **6 Equality Impact Assessment**

6.1 Equality Impact Assessment(s) will be undertaken on services as they are developed and delivered, as part of the implementation of the National Dementia Delivery Plan for Wales 2018 – 2022

## **7.0 Financial Implications**

7.1 The financial impact of taking forward the priorities with the National Dementia Delivery Plan will be evaluated as part of implementation of the plan locally, in the context of the current financial challenges and the need to achieve the directorate's Medium Term Financial Strategy, and in a climate of increasing demands being placed on the services provided.

## **8.0 Recommendation**

8.1 It is recommended that the Committee note and provide comment on the information contained in this report in respect of dementia support within Bridgend County Borough and progress to date in delivering a dementia friendly Bridgend County Borough.

**Susan Cooper**  
**Corporate Director, Social Services and Wellbeing**  
**March 2018**

**9. Contact Officer:** Carmel Donovan, Group Manager Integrated Community Services

Telephone: 01656 642236

Email: [carmel.donovan@bridgend.gov.uk](mailto:carmel.donovan@bridgend.gov.uk)

## **10. Background documents**

*Dementia Action Plan for Wales 2018-2022* Welsh Government 2018

<http://gov.wales/docs/dhss/publications/180214dementiaen.pdf>

*National Dementia Vision for Wales, Dementia Supportive Communities 2016* Alzheimer's Society and Welsh Government 2016

<http://gov.wales/docs/dhss/publications/110302dementiaen.pdf>